

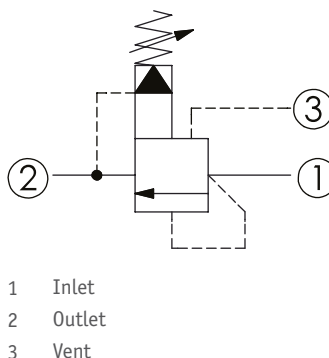
CRV-11A - Relief valve

Ventable

1 Available versions

Ordering example:

CRV-11A	-30	-A	-L
Type	Operation	Spring	Option



Operation

Coding	Description
30	Standard type

Spring

Coding	Pressure (bar)	
	Adjustment range	Standard setting
A	7 - 210	70
B	3.5 - 105	70
C	10.5 - 420	70
D	1.7 - 55	28
E	1.7 - 28	14
H	2 - 210	70
W	10.5 - 315	70

Option

Coding	Option	Drawing
L	Leakproof hex socket screw	
K	Handknob with lock knob	

Coding	Option	Drawing
C	Stainless steel tamper resistant cover	

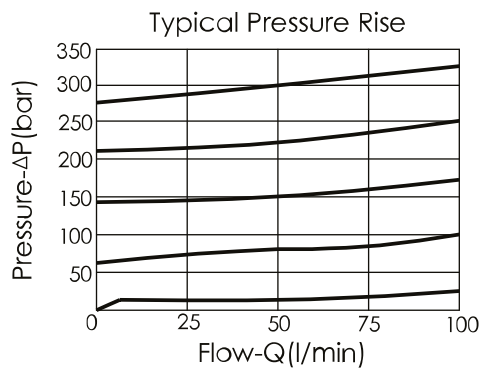
2 Technical data

Operating pressure p_{max}	350 bar
Flow rate Q_{max}	60 l/min
Installation torque	40 - 50 Nm
Cavity	T-11A
Weight	L: 0.15 kg

i INFORMATION

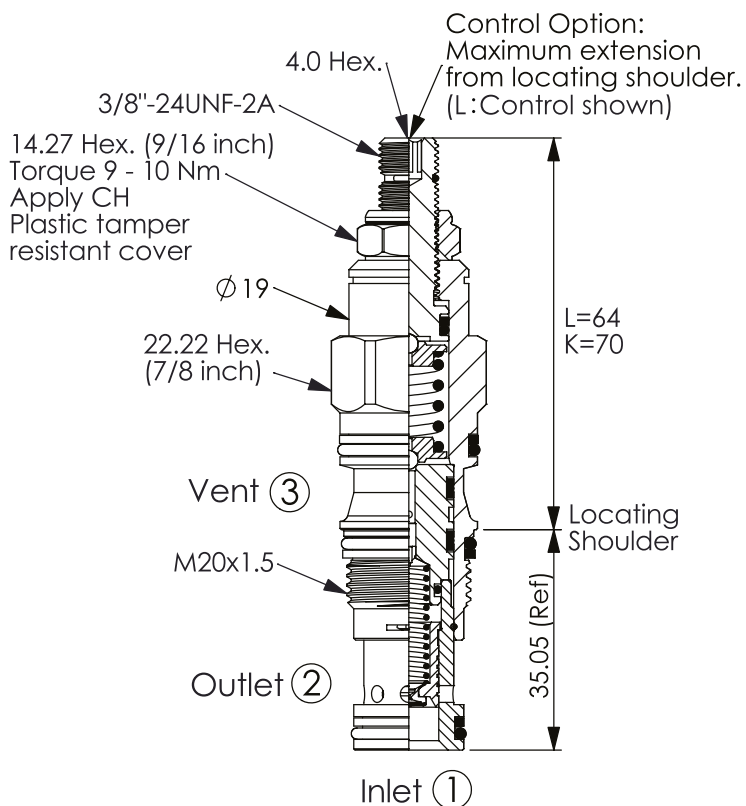
- Response time-typical (10 ms)
- Maximum leakage approximately (33 cm³/min/70 bar)
- Will accept maximum pressure at port **2** but it is necessary to install double back-up rings to valve for cross port relief circuit application.
- Leakage of spool should be concerned.

Characteristic lines



3 Dimensions

All dimensions in mm, subject to change.



4 Other information

see [Technical information HAWE cartridge valves: D 8219](#)

see [Recommendation for hydraulic fluid: D 5488/1](#)

